

1 FIG-1 WITH MATED PLUG (1:1)

RECOMMENDED PC BOARD HOLE PATTERN (2:1)
(PCB THICKNESS SHALL BE 0.8 TO 1.6)

LOGO MARKING SIDE

PCB END
LAND
CONNECTOR FRONT

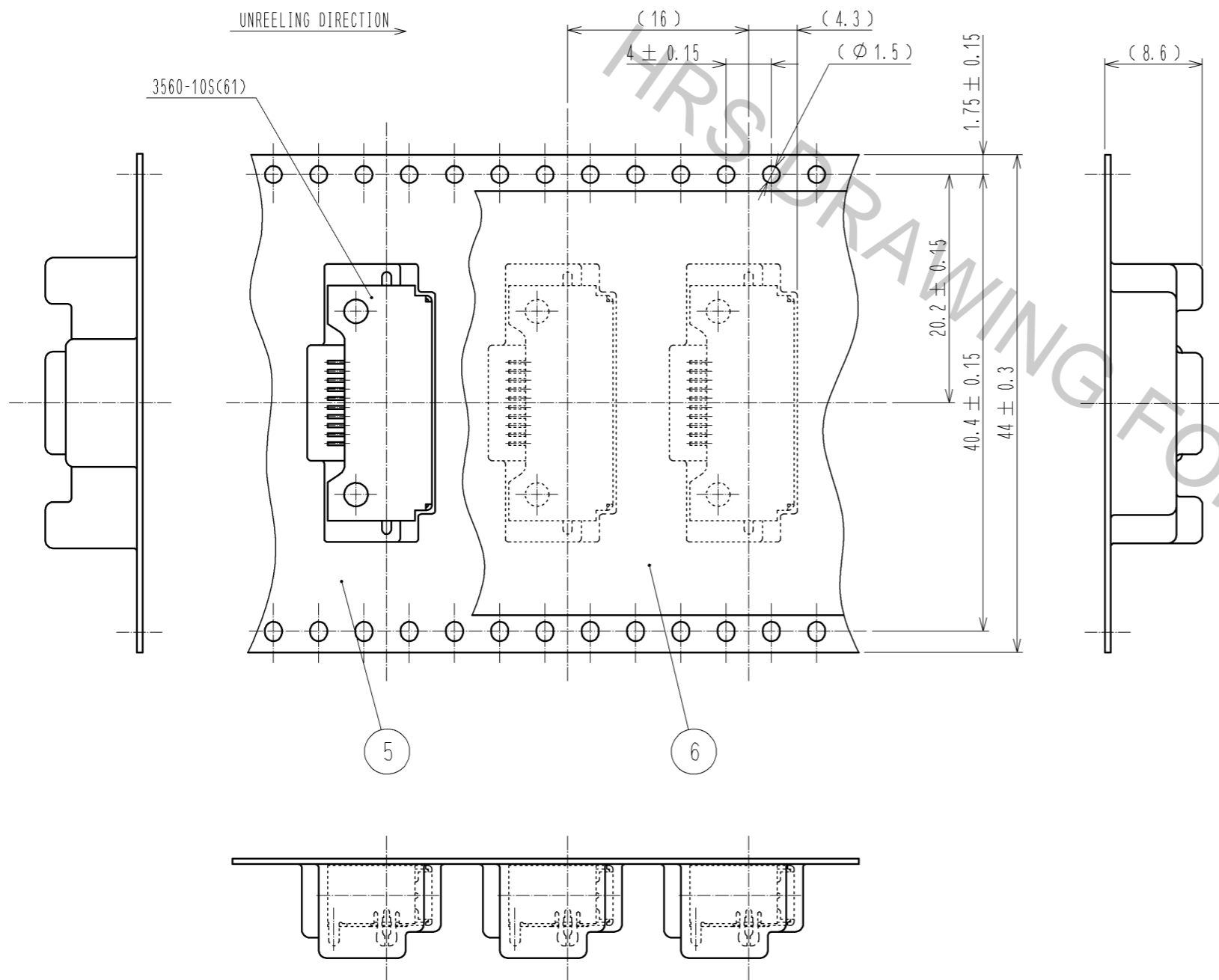
PATTERN PROHIBITION AREA

- NOTE
- 1 LOGO MARKING DIRECTION AFTER MATING(WITH PLUG) SHALL BE AS SHOWN IN FIG-1.
 - 2 DIMENSION FOR SMT PART CONTACT (REF. NO. ③, ④) AND S SHELL (REF. NO. ②) SHALL BE AS SHOWN IN FIGURE.
 - 3 IN CASE OF VACUUM MOUNTING, $\phi 1.8$ SHALL BE $\phi 2$ MIN, $\phi 1$ SHALL BE $\phi 1.2$ MIN.

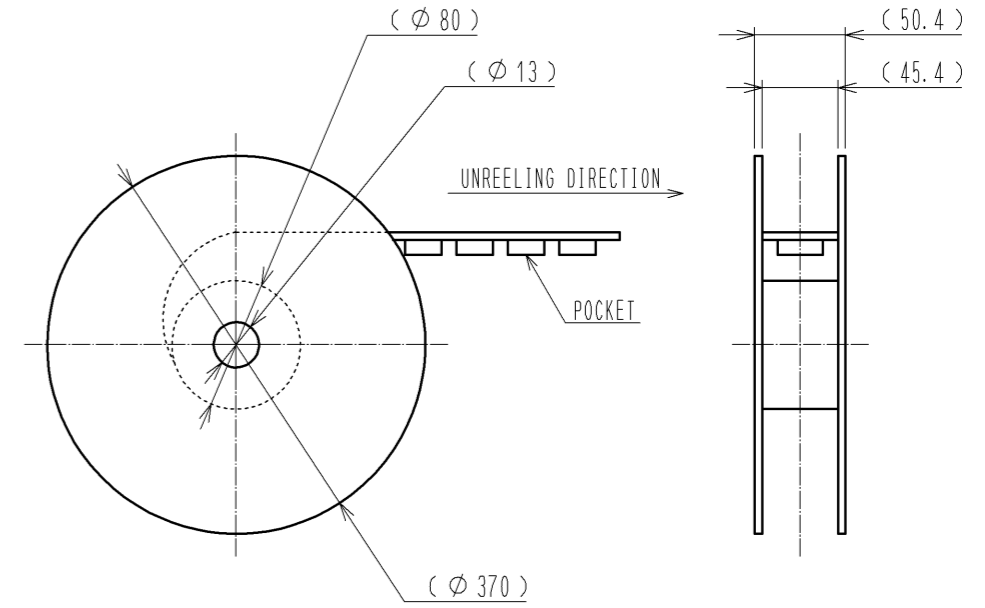
SMT CONTACT DIMENSION

6	PS				
5	PS				
4	COPPER ALLOY	CONTACT:GOLD PLATING 0.2 μ m min OVER PALLADIUM NICKEL PLATING 0.7 μ m min. LEAD :TIN COPPER PLATING 3 μ m min. UNDER :NICKEL PLATING 2 μ m min.			
3	COPPER ALLOY	CONTACT:GOLD PLATING 0.2 μ m min OVER PALLADIUM NICKEL PLATING 0.7 μ m min. LEAD :TIN COPPER PLATING 3 μ m min. UNDER :NICKEL PLATING 2 μ m min.			
2	STAINLES STEEL	OVER :TIN REFLOW PLATING 1 μ m min. UNDER:NICKEL PLATING 0.2 μ m min.			
1	POLYAMIDE	BLACK, UL94V-0			
NO.	MATERIAL	FINISH . REMARKS	NO.	MATERIAL	FINISH . REMARKS
UNITS mm		SCALE 4 : 1	COUNT	DESCRIPTION OF REVISIONS	
DESIGNED		CHECKED		DATE	
APPROVED :RI. TAKAYASU		10.10.15		DRAWING NO. EDC3-120709-02	
CHECKED :YH. ENAMI		10.10.15		PART NO. 3560-10S(61)	
DESIGNED :YH. MAMADA		10.10.14		CODE NO. CL235-0007-0-61	
DRAWN :KK. TOKUNAGA		10.10.04			

4 FIG-2 PACKAGED CONNECTOR CONDITION(2:1)



5 FIG-3 TAPE AND REEL CONDITION (FREE)



NOTE 4 CONNECTOR STORAGE STATUS SHALL BE AS SHOWN IN FIG-2.
 5 TAPE AND REEL CONDITION SHALL BE AS SHOWN IN FIG-3 AND
 NUMBER OF CONNECTOR STORAGE PER REEL:500 PCS.

HRS	DRAWING NO.	EDC3-120709-02	\triangle 2/2
	PART NO.	3560-10S(61)	
	CODE NO.	CL235-0007-0-61	