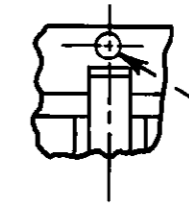
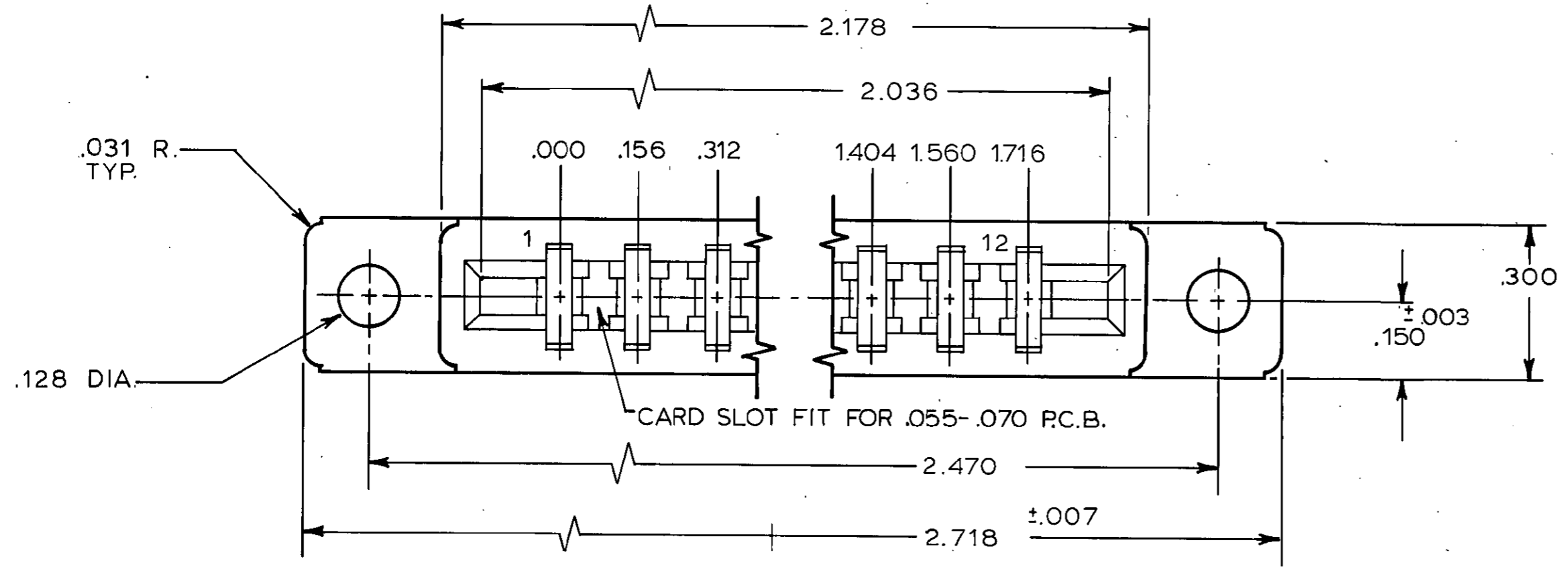
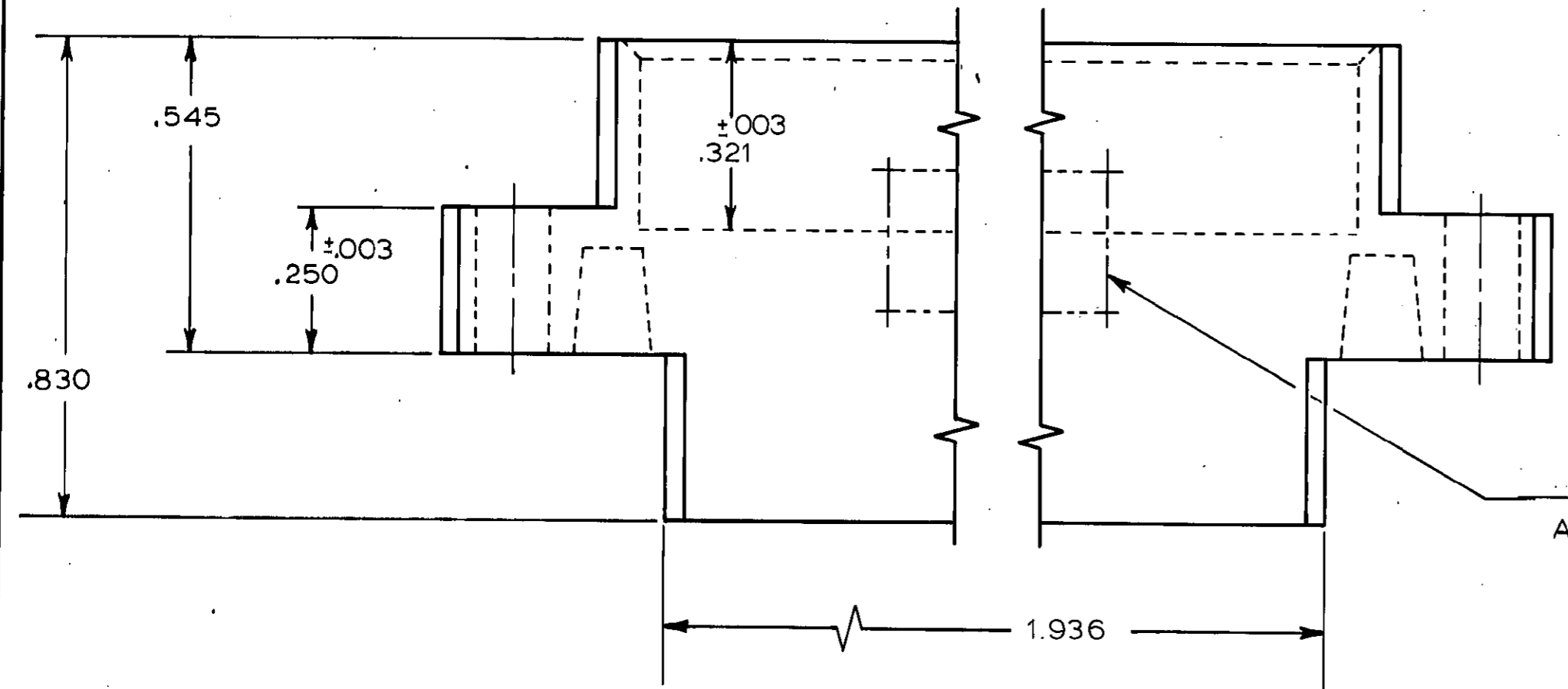


THIS DRAWING IS UNPUBLISHED. RELEASED FOR PUBLICATION NOVEMBER 8, 1967.
 © COPYRIGHT 1967 BY AMP INCORPORATED, HARRISBURG, PA. ALL INTERNATIONAL RIGHTS RESERVED. AMP PRODUCTS MAY BE COVERED BY U.S. AND FOREIGN PATENTS AND/OR PATENTS PENDING.

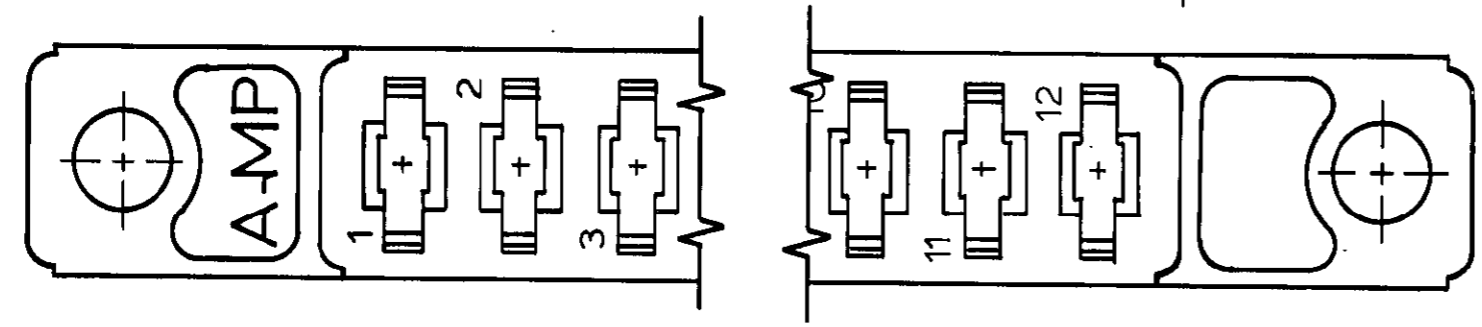
REVISIONS						
P	F	ZONE	LTR	DESCRIPTION	DATE	APPROVED
✓	✓		F1	REDWN/AD0314	SR 5/4/84	HW Rose
			G	REDRAWN PER COIO-1301-94	11/3/94	56
			H	REV PER EC.0G3C-233-01	08OCT01	MM



±.003 ±.003
 .030 DIA. x .015 HIGH
 IDENTIFICATION BOSS
 EVERY FIFTH CAVITY



MARKED "AMP", PART NO.,
 AND DATE CODE



1. USE ON CONTACT KEYING PLUG NO. 583283-1
2. USE CONTACT NO. 583259
3. GLASS FILLED NYLON, COLOR: BLACK, OR GLASS FILLED POLYESTER, COLOR: BLACK.

583300 -1		AS SHOWN	
CODE IDENT	DWG SIZE	PART NO OR IDENTIFYING NO	NOMENCLATURE OR DESCRIPTION
QTY REQD PER ASSY		REVISION OF EACH ASSY NO (WHEN BLANK, USE DWG REVISION)	
UNLESS OTHERWISE SPECIFIED DIMENSIONS ARE IN INCHES.		PARTS LIST	
TOLERANCES ON: DECIMALS ±.005 ANGLES ±		CONTRACT NO	
MATERIAL		DR <i>S. Roycroft 5-4-84</i>	
FINISH		CHK <i>HW Rose 5/30/84</i>	
3		APPD <i>Howard W Rose 5/31/84</i>	
		APPD <i>E M Cotton 5/31/84</i>	
		DSGN APPD	
		OTHER APPD	
		SIZE	FSCM NO
		C	00779
		DRAWING NO	
		583300	
SCALE 4:1		SHEET 1 OF 1	

CUSTOMER DRAWING